

The Child Care Chat



Lower Shore Child Care
Resource Center
at Salisbury University

Published by the Lower Shore Child Care Resource Center

WINTER 2021

LETTER FROM THE DIRECTOR

Greetings to the child care heroes of the Lower Shore. Thank you for the structure, stability and love you provide daily to young children in your care. The children enjoy you, their families appreciate you, and the community at large is thankful for the successful citizens you are nurturing.

We all know things are difficult these days. Routines have evolved to include new safety measures to insure everyone stays healthy. We are more excited about a shipment of Lysol and Clorox wipes than we are about a delivery from the florist! We are here to help. Please don't forget to reach out to your Lower Shore Child Care Resource Center. Technical Assistants are available to assist with any challenges you face. We can be reached during regular office hours by phone and almost all the time by email.

Thank you to all who have taken advantage of virtual training on Zoom.

The LSCCRC is adapting to your needs by offering new workshops that you can attend from home. In this issue, there are training opportunities I want to be sure you know about.

45 Hour School-Age Preservice

will prepare you to work with school-age children who attend your program. **Critical Competencies for Infant and Toddler Teachers**, also 45 hours, is a thorough training created by Zero to Three focused on teachers of the very youngest you serve. Time for vouchers has passed, but these are reimbursable trainings for those of you who are credentialed at a Level 2.



The **Leadership Training: Early Childhood Management Issues and Answers** is returning for the third time. This year, we address motivating staff and managing professionalism. This training is open to owners, directors, administrative staff and family child care providers. The LSCCRC is partnering with **Litebrite** to create a personalized training that speaks directly to your needs. If you're interested, register early.

I can't close out before reminding you about how important outside time (AKA outdoor curriculum) is for children – yes, even in chilly weather! Dress warmly, run around a lot and break up excursions outdoors. Go out for shorter periods several times a day. And, have fun!

Thank you for being the constant in children's lives.

Leslie Sinclair

PARTNERING WITH FAMILIES: Supporting Social and Emotional Development Through Picture Books

(From the Infant & Toddler Scene)

Here are three strategies to help families turn picture books into tools for rich conversations about expressing feelings, gaining self-esteem, showing perseverance and many other important skills with their children.

1. **Provide a lending library** – Create a lending library with picture books that families can check out to read at home with their child. Along with each book, you can provide a discussion guide for families to use. Include a few open-ended questions that families can ask and a brief activity they can do together after reading.

2. **Highlight a book in your communications with families** – Within the class or program-wide newsletter, email or social media page, select a picture book to highlight weekly or monthly. Select books that the families will be able to access easily located in your lending library or from the public library.
3. **Hold a family literacy event** – You can have a small workshop about how to use books to start conversations with children about social and emotional topics. Let families practice the strategies you discuss while reading with their child/children during the event. You can follow this structure and it can be adapted for a virtual workshop as well.
 - Families attend the workshop while their children spend time playing

with program staff or volunteers. The families will learn the advantages and importance of reading aloud, strategies to use when reading aloud, and how to target social and emotional development.

- Families will receive a picture book and a discussion guide, then spend a few minutes thinking about how they will use it with their child. Invite families to share their ideas and model a few strategies.
- Children will join their families. The families and children will use the new book and discuss strategies. Everyone enjoys snacks and conversation, and you can walk around to answer any questions.

Hooper, A. (2020). Partnering with Families: Supporting and Emotional Development through Picture Books, *Teaching Young Children/Preschool*, 14 (1), 14-17.

TRAINING CALENDAR

Trainings will continue virtually until further notice except for *CPR & First Aid* and *Medication Administration*. Please pay attention to the location information given with workshop details. According to MSDE, we can host no more than 14 students in a face-to-face class. We maintain social distancing and MASKS ARE REQUIRED. There will be a temperature check and other health accommodations at the training site.

JANUARY TRAININGS

Virtual OR Stepping Stones Learning Academy, 102 South Camden Ave., Fruitland, MD

Date, Time & Location	Cost	Training Title & Description	COK	Trainer
Thursday, January 7 6-9 p.m. Stepping Stones	\$85	CPR and First Aid This is a certification course by the American Health and Safety Institute. Certification is valid for two years. The next certification course will be offered in March 2021.	N/A	Jay Hyde
Saturday, January 9 9 a.m.-Noon Virtual - Zoom	Free	Block Party 1: Building a Virtual Community Learn about various technologies and ways to engage and support children and families. For Wicomico County providers only.	3COM	Wicomico BOE
Saturday, January 16 10 a.m.-1 p.m. Virtual - Zoom	\$30	Leadership Training: Early Childhood Management Issues and Answers Hear ye! Hear ye! Calling all early childhood leaders! Let's leave 2020 in our rearview mirror. Join us for a day of collaboration and support as we knock the door to 2021 wide open. Now, more than ever, we need to empower ourselves and other early care professionals in our communities with the critical knowledge and skills to make a meaningful impact in the lives of our children and families. Join forces with other leaders and reflect on ways of achieving high-quality professionalism from staff. Manage, motivate and move into the New Year! Remember, don't look back, you're not going that way! Designed for center directors, owners, administrators, Head Start site coordinators and family child care providers.	3P	Crystal Ey
Tuesday, January 19 6:30-8:30 p.m. Virtual - Zoom	\$26	Healthy Meals for Infants and Toddlers A varied and nutritious diet and good eating habits are essential for infant and toddler healthy growth and development. Healthy eating habits are easy to establish early in a child's life when the parents and caregivers have accurate knowledge of nutritional values. This workshop explores how to help build healthy eating habits in infants and toddlers.	2HSN	Cheryl Willis
Thursday, January 21 6-9 p.m. Virtual - Zoom	\$30	Basic Health and Safety Training This workshop satisfies the MSDE regulation requiring all child care providers, including all center staff and family providers, to complete this workshop. This three-hour workshop was developed in partnership with the National Center for Early Childhood Health and Wellness, Child Care Aware of America, the American Academy of Pediatrics and Maryland Family Network, with support from the Maryland State Child Care Association. Next class is March 2021. (Please note: This training is available through MSDE at no charge. Visit www.marylandpublicschools.org for more details.)	3H	Leslie Sinclair
Thursday, January 28 6:30-8:30 p.m. Virtual - Zoom	\$26	Recognizing and Responding to Challenging Behaviors This workshop reviews the importance of recognizing challenging behaviors. Participants will learn what challenging behaviors look like, how to identify them and what they can do to help. Participants also will learn how to create written observations of behaviors to identify patterns and implement strategies to prevent challenging behaviors from occurring.	2CD	Karen Price

KEY TO CORE OF KNOWLEDGE AREAS:

C=Curriculum

COM=Community

P=Professionalism

CD=Child Development

H=Health, Safety and Nutrition

SN=Special Needs

FEBRUARY TRAININGS

Virtual OR Stepping Stones Learning Academy, 102 South Camden Ave., Fruitland, MD

Date, Time & Location	Cost	Training Title & Description	COK	Trainer
Tuesday, February 2 6-9 p.m. Virtual - Zoom	\$30	Understanding Autism Spectrum Disorder in the Preschool Program Child care providers provide valuable learning experiences to children with Autism Spectrum Disorder. Participants will learn about strategies to engage children in the preschool classroom, documentation strategies, and will identify local resources that support children and families.	3SN	Patti Adkins
Saturday, February 6 9 a.m.-Noon Virtual - Zoom	Free	Block Party 2: Building a Mindful Community Learn strategies to use with children and to improve your own wellbeing. For Wicomico County providers only.	3HSN	Wicomico BOE
Saturday, February 13 9 a.m.-Noon Virtual - Zoom	\$30	Including All Children and the Americans with Disabilities Act How does the Americans with Disabilities Act affect child care providers? How do you make sure that a child with special needs is included in every activity in your child care? It can be difficult to answer these questions as you work hard to make sure all the needs of children are met in your program. Get practical information on how the ADA affects you and how to include all children in your daily activities. This class meets the MSDE requirement.	3SN	Leslie Sinclair
Thursday, February 18 6-9 p.m. Virtual - Zoom	\$30	Supporting Children with Disabilities, Delays and Special Health Care Needs Providers will identify programs, terms and resources to support children with special needs; identify their role in the IEP/IFSP process and how to support families and children; identify strategies for ensuring access for all children regardless of ability; identify how to select materials, make modifications and adaptations to enhance learning and motivation for all children.	3SN	Patti Adkins
Saturday, February 20 9 a.m.-4 p.m. Stepping Stones	\$52	Medication Administration Learn how to correctly administer medication to children in your care. This class is required and meets the MSDE criteria. The next class will be in April 2021.	6H	Denise Conklin, RN
Tuesday, February 23 6-9 p.m. Virtual - Zoom	\$30	But It's Mine! Redirecting Toddlers (Developing Social Emotional Competencies) Caregivers who intentionally teach social emotional skills throughout the daily routines produce many positive outcomes for children. This workshop will present a definition of social emotional skills and the benefits of promoting social emotional skills. Participants will be introduced to teaching strategies and engage in a "teaching laboratory" to develop tools to use and an action plan for how they will use their tools and strategies.	1.5CD, 1.5C	Cheryl Willis

CREDIT FOR CLASSES THAT WERE CANCELED DUE TO THE PANDEMIC

If you paid for a class that we were unable to provide during the COVID-19 restrictions and you did not receive a refund, you have class credit with the Resource Center. You can use it for our virtual or face-to-face classes (any that are included in our calendar) or for your membership at any time. Please email kayungel@salisbury.edu or call our office to register with a class credit. If you do not see a class that you need, please let us know.

MARYLAND FAMILIES ENGAGE (FROM MSDE)

When it comes to family engagement, it's never too early to *ENGAGE, CONNECT AND LEARN*. The *Maryland Families Engage* is an interactive website designed to help build a community of support for those who care for and work with young children. The database of resources contains links to child development, family engagement initiatives, research and more. You can sort these resources by topics and locations, and then you can share your findings with families, friends or colleagues.

If you have an event you'd like to promote to early care and education providers, parents and families or you have found a great resource you'd like to share, submit your events or resources through the links on the appropriate pages.

Visit the *Maryland Families Engage* at www.marylandfamiliesengage.org to share resources and promote school readiness, positive parent-child relationships and the benefits of family engagement!

TRAINING CALENDAR

MARCH TRAININGS

Virtual OR Stepping Stones Learning Academy, 102 South Camden Ave., Fruitland, MD

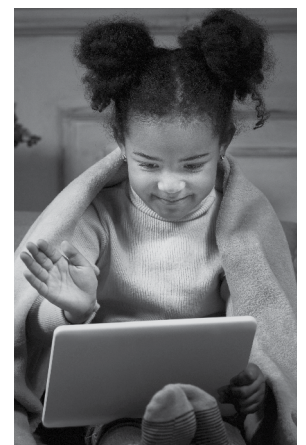
Date, Time & Location	Cost	Training Title & Description	COK	Trainer
Tuesday, March 2 6-9 p.m. Virtual - Zoom	\$30	Family-Provider Partnerships Understanding the importance of building strong partnerships with families is essential to providing quality child care. Relationships built on trust and respect are the cornerstone that allow children and adults to thrive in a caring community. In this workshop, you will learn techniques and strategies to build partnerships with families.	3P	Trina Tilghman-Dix
Saturday, March 6 9 a.m.-Noon Virtual - Zoom	FREE	Block Party 3: Building an Inclusive Community Learn strategies and gain resources for working with exceptional children. For Wicomico County providers only.	3SN	Wicomico BOE
Saturday, March 13 9 a.m.-Noon Virtual - Zoom	\$30	Basic Health and Safety Training This workshop satisfies the MSDE regulation requiring all child care providers, including all center staff and family providers, to complete this workshop. This three-hour workshop was developed in partnership with the National Center for Early Childhood Health and Wellness, Child Care Aware of America, the American Academy of Pediatrics and Maryland Family Network, with support from the Maryland State Child Care Association. Next class is May 2021. (Please note: This training is available through MSDE at no charge. Visit www.marylandpublicschools.org for more details.)	3H	Leslie Sinclair
Tuesday, March 16 6-9 p.m. Stepping Stones	\$85	CPR and First Aid This is a certification course by the American Health and Safety Institute. Certification is valid for two years. The next certification course will be offered in May 2021.	N/A	Jay Hyde
Tuesday, March 23 6-9 p.m. Virtual - Zoom	\$30	Baby Picasso: Process Art Experiences for Infants and Toddlers Art is more than just a fun activity for infants and toddlers. When little ones engage in process art, they are strengthening many developmental skills. This workshop looks at the differences between process art and arts and crafts projects. It focuses on the importance of letting little ones experience process and how this art form can support all domains of learning.	3C	Cheryl Willis
Thursday, March 25 6:30-8:30 p.m. Virtual - Zoom	\$26	I Am Full of Emotions: Why Social and Emotional Skills and Emergent Literacy Are Important This workshop discusses the importance between emergent literacy, social emotional skills and self-regulation skills. Participants will gain strategies to use in their programs that encourage their children to use positive behaviors and express themselves.	2CD	Trina Tilghman-Dix

UPDATE YOUR LOCATE INFORMATION AND ENTER TO WIN!

Relying on word of mouth to promote your child care business is no longer enough. This comes from a new *Forbes Magazine* report that gathered data on over 150,000 child care providers across the United States. As parents become busier and more tech savvy with each passing year, they are looking online to find child care and relying less on talking to their friends for information.

The good news is that when you regularly update your Maryland Family Network LOCATE: Child Care record with complete and current information, parents are better able to find and choose your program. Update your information every month at marylandfamilynetwork.org and tell us when your program has vacancies or changes to hours, fees, etc. Your information will be reviewed and made live in just two business days. Every time you update your record you will be entered into a monthly sweepstakes to win a \$25 Amazon gift card.

The LOCATE: Child Care annual update questionnaire is also available through these links! Find the questionnaire at: www.marylandfamilynetwork.org/for-providers/update-your-record





UP-TO-DATE INFORMATION FROM THE LSCCRC

Check your email inbox for the most up-to-date news from the LSCCRC. Are you on our email list? Frequently we send an update on training or scheduled activities. You will also find links to other sites and opportunities for you to take advantage of up-to-the-minute news important to you. Sometimes there are last-minute changes to office hours or open-late hours announced, PAU opportunities and events coming to the tri-county area. If you are not receiving these emails, we probably don't have your correct email address. Get in touch so we can fix that. Call us at 410-543-6650. And, don't forget to check your email!

MARYLAND CREDENTIAL PROGRAM

Credential Reminder

A cover sheet (checklist) must be submitted with all Maryland Child Care Credential applications.

Application Cover Sheets are available online:

- First-Time Applicant - <https://bit.ly/2UVxwIf>
- Renewal Cover Sheet - <https://bit.ly/2UUtNc>



Submission of Applications for Credentialing Branch

The current Maryland Child Care Credential Program booklet includes a description of application types and more detailed descriptions of the documentation for Professional Activity Units (PAUs). The booklet and other forms for the Credential Program can be found online at:

<https://earlychildhood.marylandpublicschools.org/child-care-providers/office-child-care/credentialing-branch/child-care-credential-program>

All Maryland Child Care Credentialing Program applications should be submitted directly to **Child Care Central**:

PO Box 598, Baltimore, MD 21203

Email: cccredential@conduent.com • Fax: 410-229-0145

Please contact Technical Assistance Coordinator Cheryl Willis for your questions about credentialing: clwillis@salisbury.edu.

Applications for the following programs should not be mailed at this time. Applications should be sent electronically to credentialcc.msde@maryland.gov until further notice.

- Child Care Career and Professional Development Fund
- Quality Incentive and Family Provider Grant
- Training Voucher and Training Reimbursement Applications

Note: Training Voucher and Reimbursement applications can also be submitted using the following links:

- Training Voucher: <https://earlychildhood.marylandpublicschools.org/node/511>
- Reimbursement: <https://earlychildhood.marylandpublicschools.org/node/510>

Effective October 1, 2020, Credential Award Letter and Certificate will be sent directly to your email. Please make sure that you submit the correct email address on your Credential application.

Mandatory MSDE COVID-19 Training

Registration is open for the mandatory MSDE COVID-19 training.

Visit this link to learn more: <https://earlychildhood.marylandpublicschools.org/training>

This training must be completed by January 31, 2021. Register now! This training is only offered by MSDE.

THIRD ANNUAL LEADERSHIP TRAINING

Early Childhood Management Issues and Answers

SATURDAY, JANUARY 16

Calling all early childhood leaders! If you are a center director, owner, administrator, Head Start site coordinator or family child care provider join us for networking, collaboration and support. Together, we will identify ways to manage and motivate staff. We will talk about professional development, professionalism and how to empower ourselves and our colleagues with critical knowledge and skills to make a meaningful impact in the lives of children and families. Remember, don't look back, you're not going that way! Register early!
(See Training Calendar for more information.)



Lower Shore Child Care Resource Center
at Salisbury University

WINTER 2021

Published by the Lower Shore Child Care Resource Center

Suite 500 East Campus Complex
Salisbury, MD 21801

410-543-6650

LOCATE: Child Care

1-877-261-0060

www.lowershoreccrc.org

The Lower Shore Child Care Resource Center is a member of the Maryland Child Care Resource Network with funding provided from the Maryland State Department of Education, through Maryland Family Network and Salisbury University.

Salisbury
UNIVERSITY



MARYLAND FAMILY NETWORK
Leading Maryland's Child Care Resource Centers



MARYLAND CHILD CARE RESOURCE NETWORK

SUCCESS: ONLINE REGISTRATION & PAYMENT

For your security and convenience, we now offer online registration and payment at: <https://training.lowershoreccrc.org>

The landing page shows a list of available classes arranged by date. You can choose other ways of displaying them. When you're ready to choose the classes you want to enroll in, click on Login at the top. This is where you'll create an account **if you're new to the Resource Center**. In that case, click on "(NEW? Sign Up Here)" use your preferred email address, create a password, fill in your contact information, log in and you're ready to go!

If you have taken classes with the Resource Center (we have your email and contact information in our system), you can skip down to "Forgot my Password" and follow the instructions. You will receive a one-time use temporary password that you will need to change the next time you log in. Your contact information should appear in your account screen. If needed, you can edit your information.

When you have logged in, choose the classes you want, add them to your shopping basket and proceed to the secure checkout. You can add/edit your billing address in your account screen (it should match your credit card billing address) and then go to secure checkout. You may pay with Visa or MasterCard. You will receive an order confirmation/receipt by email. If you need help, contact me at kayungel@salisbury.edu.

You will notice that we don't have a member/non-member price at this time in order to accommodate this service. Starting in July, members of the Resource Center receive one free class (maximum value of \$30) per membership year. You are also still eligible for one PAU for joining the Resource Center. You can purchase your membership online, too!

For those who have class credit with us, you will need to call or email our office to register for a class and use your credit.

NEW: RESOURCE ROOM CURBSIDE SERVICE

Resource Room services are available. Call to schedule your drop-off time, let us know when you arrive and come back to pick up your finished materials. What could be easier?

QUESTIONS ABOUT THE CORONAVIRUS?

The Centers for Disease Control (CDC) is an excellent source for Coronavirus/COVID-19 information and updates. Check out this website and stay informed: www.cdc.gov/coronavirus/2019-ncov/specific-groups/guidance-for-schools.html

To learn more about COVID-19 and Child Care in Maryland, visit the MSDE Coronavirus website: <http://marylandpublicschools.org/newsroom/Pages/COVID-19/ChildCare/index.aspx>

HOW TO GET YOUR TRAINING HOURS

LSCCRC: Virtual classroom, networking with others through active discussion

Self-Paced: Convenient, using *Smart Horizons*

Individualized: Virtual training tailored to a group's specific need

Think about it, choose what best suits you, and contact Leslie Sinclair at lasinclair@salisbury.edu or at 410-543-6650.

TRAINING POLICY

C-Curriculum CD-Child Development COM-Community H-Health, Safety and Nutrition P-Professionalism SN-Special Needs

Thank you for abiding by the following training policy. By doing this, you are helping us maintain our high standards and provide the highest quality training:

- You must pre-register for all classes. Registration forms can be found on LSCCRC's website, in our newsletter or at our office. Training registrations are on a first-come, first-served basis; register early. You are not considered to be registered for a class until payment has been received.
- Payment for a class should be made payable to Salisbury University. We gladly accept cash, check, Visa or MasterCard. There is a \$25 returned check fee. You can now register online with your Visa or MasterCard at www.training.lowershoreccrc.org
- Class registration fees are non-refundable. However, if you are unable to attend a training session, you must notify our office by close of business the day before the training in order to receive credit toward another class.
- In order to ensure that all classes are conducted as scheduled, please register early. If the minimum registration requirement is not met prior to the class, it will be canceled. We will notify all registered students of this cancellation.
- In order to get a certificate for training, an attendee will need to be present for the entire training.
- Please be on time for all trainings, as no one will be admitted late. Leaving a training early or arriving late can distract others from learning. Also, taking only a portion of a training does not allow for a participant to get a full grasp of the subject and takes away training opportunities from other providers who need the full amount of training hours.
- Although we love children at LSCCRC, please do not bring them to class with you.
- Certificates will be awarded to all participants successfully completing a class. Please keep these certificates for licensing and credentialing purposes. **This is your professional responsibility!**
- Please check with local television stations for any possible cancellations due to bad weather. If a training is canceled, it will be rescheduled for a later date. The Resource Center is closed if Salisbury University is closed.
- Please be respectful of the trainer and other class members. Save private conversations for break time or after class. Cell phones, including texting, can be disruptive to others. Please turn your cell phone off at the beginning of class or put it on silent. Disruptive participants will be asked to leave the class and will not be given credit for the class or a refund.

OFFICE ACCESS REMINDER

THE PUBLIC IS NOT PERMITTED TO ENTER THE RESOURCE CENTER UNTIL FURTHER NOTICE; HOWEVER, WE ARE IN THE OFFICE. YOU MAY REACH US BY PHONE DURING WORKING HOURS AT 410-543-6650 OR BY EMAIL. Regular hours of operation are: Monday-Friday, 9 a.m.-5 p.m.

YOUR PROFESSIONAL RESPONSIBILITIES

1. Take trainings in your specialty area whenever possible
2. Network with your colleagues
3. Join a professional organization
4. Keep records of your training
5. Don't forget to take care of yourself!

PROFESSIONAL DEVELOPMENT OPPORTUNITIES BEGINNING IN JANUARY

■ 45-Hour School Age Preservice

- Virtually, Tuesdays and Thursdays in January and February – beginning Tuesday, January 5
- For those who currently teach or have access to a school-age classroom for onsite learning activities
- Dr. Donna Satterlee, UMES early education faculty, facilitates.
- Cost: \$300. You may be able to eligible for reimbursement for this training (if you are in the Maryland Credential program at Level 2 or higher).

■ Critical Competencies for Infant-Toddler Educators

- Virtually, Mondays in January through April – beginning Monday, January 11
- For teachers of children birth to three years old
- Trainers for these modules are Dr. Donna Satterlee of UMES, Wicomico County Judy Center Coordinator Trina Tilghman-Dix and regional EXCELS Quality Assurance Specialist Dianna Aguirre.
- Cost: \$300. You may be eligible for reimbursement for this training (if you are in the Maryland Credential program at Level 2 or higher).

LOCATE COMPLAINT POLICY

Through the Maryland Family Network's LOCATE: Child Care service, parents can share feedback about the programs in the database, including licensed child care centers, registered family child care providers, and accredited preschools and camps. This feedback can sometimes involve complaints about caregivers. MFN and the Maryland Child Care Resource Network use this information in a way that is fair to providers and parents – while protecting children.

The LOCATE: Child Care Complaint Policy was developed by the board of directors of one of MFN's legacy organizations, the Maryland Committee for Children, and was approved by that body in November 1983. According to this policy, all complaints made to LOCATE: Child Care about child care providers and facilities are recorded.

TYPES OF COMPLAINTS

- **Less Serious Complaints with No Violation** do not involve violations of child care regulations; do not involve situations that pose a threat to the safety, health or welfare of a child.
- **Less Serious Complaints Involving Violation** include any violation of Office of Child Care (OCC), Maryland State Department of Education (MSDE) regulations and/or the Health Department; situations do not pose a threat to the health, safety or welfare of a child.
- **Serious Complaints** include any threat to the immediate health, safety or welfare of a child.

When a parent or guardian calls LOCATE: Child Care with a complaint, the referral specialist advises to register the complaint directly with the appropriate regulatory agency and/or Protective Services. The parent is given the names and telephone numbers for the people they should contact.

When a **Serious Complaint** is received concerning a provider in the LOCATE: Child Care system, referrals to that provider cease until the situation is resolved. The LOCATE: Child Care director communicates with the appropriate regulatory agency about the complaint and maintains the hold on referrals until the disposition of the complaint is known. Should the investigation result in no action, the hold status is removed from the provider's record. Should the license or registration be revoked, the facility is removed from the LOCATE: Child Care database. Providers are advised of LOCATE: Child Care's actions in writing.

A provider may appeal the LOCATE: Child Care decision to cease referrals. Appeals are first addressed to the LOCATE: Child Care Advisory Committee. Final appeals may be made to the board of the Maryland Family Network.

It is the position of LOCATE: Child Care and MFN that the Complaint Policy is both fair and effective. Safeguards and due process are afforded to providers while parents' and children's rights are upheld. Any questions about this policy should be addressed to LOCATE: Child Care Director FloJean Speck at fspeck@Marylandfamilynetwork.org.

LSCCRC PARTNERS WITH SMARTHORIZONS FOR SELF-PACED ONLINE TRAININGS

SmartHorizons is the platform we support for high-quality online trainings. You can access their site through an easy link from our website! Click on the training tab at www.lowershoreccrc.org, then click on "Online Training Classes from SmartHorizons." There is a good selection of online training to help you get what you need, when you need it. If you want to take these online courses and have difficulty, call us and we will walk you through the registration process.



NON-PROFIT ORG.
U.S. POSTAGE
PAID
SALISBURY, MD
PERMIT NO. 65

THE LOWER SHORE CHILD CARE RESOURCE CENTER
Suite 500
East Campus Complex
Salisbury, MD 21801



ADDRESS SERVICE REQUESTED



Visit Us on the World Wide Web

Just log onto www.lowershoreccrc.org or scan the code to view a copy of our newsletter, training calendar or just some helpful child care info.

Check us out on Facebook: Lower Shore Child Care Resource Center

Join/renew now for \$25. You will earn one PAU and will receive one free two-hour class per membership year. You may join or renew your membership at any time. Use the form below for membership payment as well as class registration.

REGISTRATION FORM

Name _____ Resource Center Member? Yes _____ No _____

Center (if applicable) _____

Address _____ Phone _____
Street City State Zip Area Code

Email Address _____

Make personal check or money order for FULL AMOUNT payable to: Salisbury University
Mailing Address: C/O Lower Shore Child Care Resource Center, Suite 500, East Campus Complex,
Salisbury University, Salisbury, MD 21801. Phone Number: 410-543-6650

Course Title	Date	Fee
_____	_____	_____
_____	_____	_____
_____	_____	_____
_____	_____	_____

Credit card: Visa _____ MasterCard _____ Name on card _____

Account Number _____ Expiration Date _____