

The Child Care Chat



Lower Shore Child Care
Resource Center
at Salisbury University

Published by the Lower Shore Child Care Resource Center

SPRING 2019

LETTER FROM THE DIRECTOR

So much is happening in our region related to young children this spring! Besides the great outdoor play weather, flowers, field trips and sunshine, there is the screening of *No Small Matter*, the Early Childhood Fair, town hall meetings, the Conference by the Sea and the Infant/Toddler Picnic in the Park. If you let me know about others, I will be glad to post them on our social media outlets. In the meantime, check out these events that allow you to earn clock hours and/or PAUs (Professional Activity Units):

No Small Matter: Wednesday, April 3, 6-9 p.m. with a pre-screening reception from 6-6:30 p.m., Perdue Hall Room 156, SU. This documentary works to change the perception of when learning begins and how best to use the early years to prepare children for their future. *No Small Matter* is an entertaining, accessible and inspiring film that highlights the importance of early education and how it should move to the top of any political agenda. There is a keynote and a panel of speakers following the screening. Providers can earn 2 COK in Professionalism. There is no cost to attend, but you MUST register online. Online registration is available through EventBrite. For more information about how to register and get your required Visitor Parking Pass, you may call the Lower Shore Child Care Resource Center at Salisbury University at 410-543-6650 or email kayungel@salisbury.edu.

Early Childhood Fair: Saturday, April 13, 10 a.m.-2 p.m., Centre at Salisbury (AKA the mall). This event is sponsored by the MDAEYC in recognition of the Week of the Young Child. Attendees can earn a PAU while learning about resources important to the families you work with every day. There is entertainment and opportunities to network and re-connect with colleagues. Your LSCCRC staff will be there!

Town Hall Meetings: Thursday, April 25, 8:30-11:30 a.m. and 5:30-8:30 p.m., Wor-Wic Community College. Maryland recently was awarded a \$10.6 million birth through five grant to further strengthen the state's early care and education system. Please join state and community leaders at a regional town hall meeting near you to learn more about the grant, as well as new state programs and initiatives. Share your insight into the needs of families and young children in your communities to inform a new early learning strategic plan for Maryland. Learn more at: <https://tinyurl.com/yy8zuruf>.



Conference by the Sea: Thursday-Sunday, May 2-5, Clarion Resort Fontainebleau Hotel, Ocean City, MD. This conference is presented by your state child care association. Are you a member of the MSCCA? Have you ever attended a state-wide conference? You should consider attending this one. It's large and busy and right in your own back yard! You will connect with colleagues from across Maryland, earn two PAUs and can earn up to 17 hours of MSDE-approved training. I know you will enjoy networking on a large scale. Check out this website for more information: www.MSCCA.org.

Infant/Toddler Picnic in the Park: Saturday, June 1, 10 a.m.-2 p.m., Picnic Island, Salisbury City Park. Network with colleagues who also work with infants and toddlers. There will be a series of tables for topical discussions on biting, potty training, feeding and other hot issues. You can earn 1 PAU for attending this community event.

Whatever you decide to do this spring, enjoy the sunny weather and outdoor playtime with the children. Exercise large motor skills and plant gardens. Read enchanting books and build great castles. Learn something new every day.

Leslie Sinclair

TRAINING CALENDAR

All trainings are at the LSCRC, unless otherwise noted.

APRIL

Taking Good Care of You (3 H) *NEW!*

Tuesday, April 2 • 6-9 p.m.

Trainer: Courtney Crawford

Fee: \$30 Non-members/\$20 Members

This workshop will increase awareness of the need for caregivers to take care of themselves. Without good self-care, there may come a point when we have nothing left to give. Participants will learn the signs of burnout, brainstorm ideas on how to avoid burnout, examine the importance of staying healthy, discover resources, discuss the need to not control everything in life and become more aware that it is impossible to be perfect. Participants will create a personal action plan for self-care.

Planning the Day for Infants and Toddlers (3 C)

Tuesday, April 2 • 6-9 p.m.

Trainer: Jordon Helgason

Fee: \$30 Non-members/\$20 Members

Yes, you need to have a plan to work with very young children. In this workshop, you will learn about scheduling and meeting the needs of infants and toddlers in your lesson plan.



No Small Matter Screening and Discussion (2 P)

Wednesday April 3 • 6-9 p.m. (with a pre-screening reception from 6-6:30 p.m.)

LOCATION: Perdue Hall, SU Campus

Fee: FREE event, but you MUST register online

No Small Matter is a feature-length documentary film and national engagement campaign that brings public attention to the question of how to provide

the best care to our youngest citizens by sharing powerful stories and stunning truths about the human capacity for early intelligence. Quality early care and education benefits America's social and economic future. View this important film and take part in a panel Q&A session. Online registration is available through EventBrite. For more information about how to register and get your required Visitor Parking Pass, you may call the Lower Shore Child Care Resource Center at Salisbury University at 410-543-6650 or email kayungel@salisbury.edu.



Early Childhood Fair (1 PAU)

Saturday, April 13 • 10 a.m.-2 p.m.

LOCATION: The Centre at Salisbury by Boscov's

Bring your families and friends with children for fun at the mall. Check out the resources provided by vendors from Wicomico, Worcester and Somerset counties and earn a PAU.

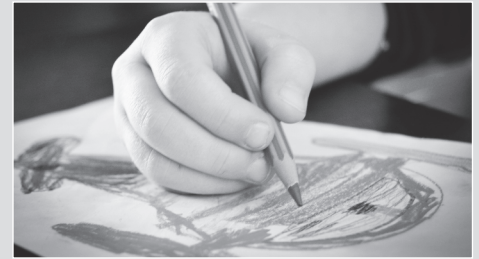
Basic Health and Safety Training (3 H)

Thursday, April 25 • 6-9 p.m.

Trainer: Leslie Sinclair

Fee: \$30 Non-members/\$20 Members

This workshop satisfies the MSDE regulation requiring all child care providers, including all center staff and family providers, to complete this workshop. This three-hour workshop was developed in partnership with the National Center for Early Childhood Health and Wellness, Child Care Aware of America, the American Academy of Pediatrics, and Maryland Family Network, with support from the Maryland State Child Care Association.



Hands-on Art for Twos (3 C) *NEW!*

Thursday, April 25 • 6-9 p.m.

Trainer: Cherry Conley

Fee: \$30 Non-members/\$20 Members

Art exploration with open-ended materials provides countless opportunities for children to develop fine motor skills, social emotional skills, emerging perceptual-motor skills as well as pre-reading and writing skills. This workshop explores a variety of open-ended art experiences that are age and developmentally appropriate for the young child.

Exploring Social Studies Concepts with Children's Books (3 C) *NEW!*

Saturday, April 27 • 9 a.m.-noon

Trainer: Ellen Sprouls

Fee: \$30 Non-members/\$20 Members

Young children are naturally curious about the people and places in their world; this desire to learn about their world is what social studies is all about. Creating a learning environment that encourages exploration of our world and its people is an important component of early education. Children's literature that focuses on the various concepts of social studies is an ideal catalyst to help children learn about the world and its peoples.



Exploring Math Concepts Using Children's Books (3 C) *NEW!*

Saturday, April 27 • 9 a.m.-noon

Trainer: Julie Stevens

Fee: \$30 Non-members/\$20 Members

Literature is an ideal vehicle to help young children see the importance of numbers and math concepts in their daily lives. This workshop explores the many ways of creating a classroom environment that stimulates mathematical thinking, and preparing fun math activities based on children's literature.

Hours of Operation:

The Resource Center is open from 9 a.m.-5 p.m., Monday-Friday. We also will be open until 9 p.m. one Tuesday and Thursday each month and 9 a.m.-noon one Saturday each month.

Detailed hours each month are posted on the door.

MAY

Fit From the Start (1.5 H, 1.5 C) *NEW!*

Tuesday, May 7 • 6-9 p.m.
Trainer: Courtney Crawford
Fee: \$30 Non-members/\$20 Members

In this interactive training, participants will learn the definition of obesity and the factors that are leading to a rise in the obesity rates of children (and adolescents). Participants will discover strategies to utilize in their child care setting and curriculum to encourage healthy eating habits and movement activities for all young children.



Building Resilience in Young Children (3 CD) *NEW!*

Trainer: Keoshia Chaibou
Tuesday, May 7 • 6-9 p.m.
Fee: \$30 Non-members/\$20 Members

In this workshop, participants will learn that warm and nurturing relationships between children and the adults in their lives are the most important factor in developing resilience and overcoming potential negative effects of daily stress.

CPR and First Aid (no COK)

Thursday, May 9 • 6-9 p.m.
Trainer: Jay Hyde
Fee: \$65 for all (non-refundable)

This is a certification course by the American Health and Safety Institute. Certification is valid for two years. The next certification course will be offered in July 2019.

Child Abuse and Neglect (3 H)

Thursday, May 9 • 6-9 p.m.
Trainer: Pam Thompsen
Fee: \$30 Non-members/\$20 Members

Child care providers are mandated reporters. In this class, you will learn what constitutes abuse, what neglect looks like, how to report the details, and how to speak to colleagues and parents about difficult issues. Participants also will learn how to protect themselves and their business from accusations.

Medication Administration (6 H)

Saturday, May 11 • 9 a.m.-4 p.m.
Trainer: Denise Conklin, RN
Fee: \$52 for all (non-refundable)

Learn how to correctly administer medication to children in your care. This class is required and meets the MSDE criteria. The next class is offered in June 2019.

It's a Simple Story, Tell It (3 C) *NEW!*

Saturday, May 11 • 9 a.m.-Noon
Trainer: Cynthia Malone
Fee: \$30 Non-members/\$20 Members

Storytelling is an integral part of our lives. We can enhance communication and encourage language development and social competence by expanding our capacity to tell stories.

Including All Children and the Americans with Disabilities Act (3 SN)

Saturday, May 18 • 9 a.m.-Noon
Trainer: Leslie Sinclair
Fee: \$30 Non-members/\$20 Members

How does the Americans with Disabilities Act affect child care providers? How do you make sure that a child with special needs is included in every activity in your child care? It can be difficult to answer these questions as you work hard to make sure all the needs of children are met in your program. Get practical information on how the ADA affects you and how to include all children in your daily activities. This class meets the MSDE requirement.

Math Activities Using Literature (3 C) *NEW!*

Saturday, May 18 • 9 a.m.-Noon
Trainer: Karen Price
Fee: \$30 Non-members/\$20 Members

Using fun and engaging stories is a great way to get children engaged in math. Stories bring new experiences to life. Books can increase engagement and build fluency with math concepts. In this workshop, you will explore new ways to approach math in your program using children's literature.

Learning with Blocks (3 C) *NEW!*

Thursday, May 23 • 6-9 p.m.
Trainer: Ellen Sprouls
Fee: \$30 Non-members/\$20 Members

Block exploration is a timeless, classic play activity that has endured through many different ideologies and theories of child development. Playing with blocks beginning at a young age provides countless opportunities for the development of language, social skills as well as emerging perceptual-motor skills.

Talking with Families: The Key to Discussing Difficult Issues (3 CY) *NEW!*

Thursday, May 23 • 6-9 p.m.
Trainer: Patti Adkins
Fee: \$30 Non-members/\$20 Members

Difficult conversations don't come easy, especially when you are discussing someone's child. When talking to a parent about a sensitive issue that involves their young child, be certain you are prepared. In this training, participants will learn how to talk to parents about the hard stuff, how to help them understand processes, how to answer difficult questions and how to share resources.

JUNE

Infant/Toddler Picnic in the Park (1 PAU),

Saturday, June 1, 10 a.m.-2 p.m.
LOCATION: Picnic Island, Salisbury City Park
Network with colleagues who also work with infants and toddlers. If you have questions, please call our office.

Accommodating Children with Autism and other Diagnoses in the Classroom (3 SN) *NEW!*

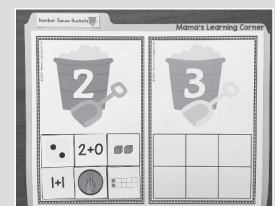
Tuesday, June 4 • 6-9 p.m.
Trainer: Rhyannon Bemis
Fee: \$30 Non-members/\$20 Members

This workshop will first explore some of the special needs identified in child care. Then, participants will focus on adaptations they can make to include all children. You will talk about the environment, lesson planning, scheduling, administrative practices, curriculum, family engagement and other accommodations needed to meet the needs of children, families and staff.

STEAM File Folder Games: Math and Science for Early Childhood (3 C) *NEW!*

Tuesday, June 4 • 6-9 p.m.
Trainer: Keoshia Chaibou
Fee: \$30 Non-members/\$20 Members

At this make and take, participants will produce file folder games to use in their classrooms on Monday morning. Work with your colleagues to design and create developmentally appropriate file folder games for preschoolers in math and science.



(Continued)

TRAINING CALENDAR

Medication Administration (6 H)

Saturday, June 15 • 9 a.m.-4 p.m.

Trainer: Denise Conklin, RN

Fee: \$52 for all (non-refundable)

Learn how to correctly administer medication to children in your care. This class is required, and meets the MSDE criteria. The next class is offered in August 2019.

Indoor and Outdoor Nature-Based Learning for Infants and Toddlers (3 C) *NEW!*

Saturday, June 15 • 9 a.m.-noon

Trainer: Jordon Helgason

Fee: \$30 Non-members/\$20 Members

Long before electronic toys, LEGOS or even stuffed animals, infants and toddlers learned in and from their natural environment – nature! There is an unending list of items to see, touch, feel, hear, climb and explore in nature, contributing to learning in every early childhood domain. This training will identify Howard Gardner’s Multiple Intelligence “Naturalist” and ways in which infant and toddler programs can incorporate developmentally appropriate play-based nature experiences in their indoor and outdoor environments.

Participants will gain skills, strategies and techniques for implementing natural STEAM in developmentally appropriate ways for infants and toddlers.



STEAM: Nothing but Water (3 C) *NEW!*

Thursday, June 20 • 6-9 p.m.

Trainer: Ellen Sprouls

Fee: \$30 Non-members/\$20 Members

Water is an amazing medium through which many skills can be learned. Besides the obvious physical development gained through swimming and moving through water, children can grow cognitively, socially and emotionally by using water and water-based activities. In this session, participants will learn ways to incorporate water activities into their day while allowing children to develop content skills through exploration and conversation with their teacher and peers.



Basic Health and Safety Training (3 H)

Thursday, June 20 • 6-9 p.m.

Trainer: Leslie Sinclair

Fee: \$30 Non-members/\$20 Members

This workshop satisfies the MSDE regulation requiring all child care providers, including all center staff and family providers, to complete this workshop. This three-hour workshop was developed in partnership with the National Center for Early Childhood Health and Wellness, Child Care Aware of America, the American Academy of Pediatrics, and Maryland Family Network, with support from the Maryland State Child Care Association.

REQUIRED TRAININGS OFFERED AT THE RESOURCE CENTER:

- Basic Health and Safety Training
- Including All Children and the Americans with Disabilities Act
- Medication Administration
- Emergency Preparedness
- Center Aid Pre-service
- CPR and First Aid

HOW TO GET YOUR TRAINING HOURS

At the LSCCRC: In a classroom, networking with others through active discussion.

Online: Convenient, individual, working @ home or @ the LSCCRC.

Onsite: Specifically arranged and tailored to the group’s specific need.

Think about it, choose what best suits you, and contact the LSCCRC at 410-543-6650.

TRAINING POLICY

C-Curriculum CD-Child Development CY-Community H-Health, Safety and Nutrition P-Professionalism SN-Special Needs

Thank you for abiding by the following training policy. By doing this, you are helping us maintain our high standards and provide the highest quality training:

- You must preregister for all classes. Registration forms can be found on LSCCRC’s website, in our newsletter or at our office. Training registrations are on a first-come, first-served basis; register early. **You are not considered to be registered for a class until payment has been received in our office.**
- Payment for a class should be made payable to Salisbury University. We gladly accept cash, check, Visa or MasterCard. There is a \$25 returned check fee.
- Class registration fees are nonrefundable. **However, if you are unable to attend a training session, you must notify our office by close of business the day before the training in order to receive credit towards another class.**
- In order to ensure that all classes are conducted as scheduled, please register early. If the minimum registration requirement is not met prior to the class, it will be cancelled. We will notify all registered students of this cancellation.
- In order to get a certificate for training, an attendee will need to be present for the entire training.
- Please be on time for all trainings, as no one will be admitted late. Leaving a training early or arriving late can distract others from learning. Also, taking only a portion of a training does not allow for a participant to get a full grasp of the subject and takes away training opportunities from other providers who need the full amount of training hours.
- Although we love children at LSCCRC, please do not bring them to class with you.
- Certificates will be awarded to all participants successfully completing a class. Please keep these certificates for licensing and credentialing purposes. If you need a duplicate copy of your certificate, you will be charged \$1 per copy.
- Please check with local television stations for any possible cancellations due to bad weather. If a training is cancelled, it will be rescheduled for a later date.
- Please be respectful of the trainer and other class members. Save private conversations for break time or after class. Cell phones, including texting, can be disruptive to others. Please turn your cell phone off at the beginning of class or put it on silent. Disruptive participants will be asked to leave the class and will not be given credit for the class or a refund.



MARYLAND CREDENTIAL PROGRAM UPDATE

The Maryland Child Care Credential Program booklet recently was updated! Updated information includes a description of application types and more detailed descriptions of the documentation for Professional Activity Units (PAUs). The booklet and other forms for the Credential Program can be found at <https://earlychildhood.marylandpublicschools.org/child-care-providers/office-child-care/credentialing-branch/child-care-credential-program>.

LOCATE COMPLAINT POLICY

Through the LOCATE service, parents share feedback with the LOCATE staff on the programs in the files: licensed child care centers, registered family child care providers, and accredited preschools and camps. While this feedback is at times positive, it sometimes concerns complaints parents have about child caregivers. Of course, LOCATE and the Maryland Child Care Resource Network want to use this information in a way that is fair to providers and parents, while protecting children as well. Therefore, the LOCATE Complaint Policy was developed and has been in effect since its approval by the Maryland Committee for Children Board in November 1983. According to this policy, all complaints made to LOCATE about child care providers/facilities are recorded. The type of complaint is then determined:

Less Serious Complaint – No Violation: Complaints that do not involve violations of child care regulations; complaints about situations which do not pose a threat to the safety, health or welfare of a child.

Less Serious Complaint Involving Violation: Complaints of any violation of Office of Child Care (OCC), Maryland State Department of Education (MSDE) regulations and/or the Health Department that do not pose a threat to the health, safety or welfare of a child.

Serious Complaint: Any threat to the immediate health, safety or welfare of a child. When a parent calls LOCATE with a complaint, the referral specialist advises him/her to register the complaint directly with the appropriate regulatory agency and/or Protective Services. Names and telephone numbers of the person with whom the parent should speak are provided. When a Serious Complaint is received concerning one of the providers of facilities in the LOCATE system, no referrals are made by the referral specialists to that provider/facility. The LOCATE director also communicates with the appropriate regulatory agency personnel about the complaint and maintains the “hold” on the provider/facility until the agency’s disposition of the complaint is known. Should the investigation result in no action, the “hold” status is removed from that provider’s/facility’s records. Should the license or registration be revoked, the record is removed from the LOCATE files. Providers are advised of LOCATE’s actions in writing. A provider may appeal the LOCATE director’s decision to cease referrals. Appeals are first addressed to the LOCATE Advisory Committee. Final appeals may be made to the board of the Maryland Family Network.

It is the position of LOCATE and MFN that the Complaint Policy is both fair and workable. Safeguards and due process are afforded to the care givers in the files, and parents’ and children’s rights to safety are addressed, as well. Any questions on this policy should be addressed to LOCATE at Maryland Family Network (MFN) at 410-659-7701.



Lower Shore Child Care
Resource Center
at Salisbury University

SPRING 2019

Published by the Lower Shore
Child Care Resource Center

Suite 500 East Campus Complex
Salisbury, MD 21801
410-543-6650
LOCATE: Child Care
1-877-261-0060
www.lowershoreccrc.org

The Lower Shore Child Care Resource Center at Salisbury University

The Lower Shore Child Care Resource Center is a member of the Maryland Child Care Resource Network with funding provided from the Maryland State Department of Education, through Maryland Family Network and Salisbury University.

Salisbury
UNIVERSITY



MARYLAND
FAMILY
NETWORK
*Leading Maryland's
Child Care Resource Centers*



MARYLAND CHILD CARE
RESOURCE NETWORK

MARYLAND EXCELS 2.0 UPDATE

Since the Maryland EXCELS 2.0 launch on Friday, October 26, 2018, there have been reports of challenges providers and programs are experiencing in the Maryland EXCELS and Maryland Accreditation portals. Maryland EXCELS is working to identify solutions to improve your experience in the new system. For more information about common challenges and their solutions, visit the Solution Center at www.marylandexcels.org/system.



CONGRATULATIONS ARE IN ORDER

The Lower Shore Child Care Resource Center congratulates the following providers on their most recent accomplishments:

- **Corner Campus:**
Achieved MSDE Accreditation
- **Denise Davis:**
Achieved EXCELS Level 2
- **Danyelle Dixon:**
Achieved EXCELS Level 3
- **Duawan Mills:**
Achieved EXCELS Level 3

If you are interested in having your achievements published in our newsletter or would like support in meeting these accomplishments, contact your technical assistance coordinator at the LSCCRC.

THINK ABOUT CONTRIBUTING TO YOUR CHILD CARE RESOURCE CENTER

Everyone can use a tax deduction, and there is a way to help the LSCCRC through the Salisbury University Foundation. Go to this site and please be generous!

<https://salisburyu.networkforgood.com/projects/26911-seidel-school-of-education-the-lower-shore-child-care-resource-center>

DO YOU RECEIVE EMAILS FROM THE LSCCRC?

By checking your email, you will receive the most up-to-date news from the LSCCRC. Are you on our email list? Frequently, we send an update on training or scheduled activities. You might also find links to other sites and opportunities for you to take advantage of up-to-the minute news important to you. Sometimes there are last-minute changes to office hours or open-late hours announced, as are PAU opportunities and events coming to our tri-county area. If you are not receiving these emails, we probably don't have your correct email address. Please get in touch so we can correct that. Call us at 410-543-6650. And, don't forget to check your email!



UPDATE: ONLINE TRAINING @ LSCCRC

SmartHorizons is the source we support for high-quality online trainings. You can access their site through an easy link from our website! Click on the training tab at www.lowershoreccrc.org, then click on "Online Training Classes from SmartHorizons."

We are pleased to announce that we now offer, through SmartHorizons, the 90-hours Child Care I & II, Child Development and Curriculum Methods. If you want to add this to your professional development portfolio, you can work at your own pace. Contact this office before you sign up.

There is a good selection of online training to help you get what you need, when you need it. If you want to take these online courses and have difficulty, call us and we will walk you through the registration process. If you do not have reliable connectivity at your address, we have a laptop for you to use at the LSCCRC Resource Room. Come on in!

PROFESSIONAL DEVELOPMENT RESPONSIBILITIES

1. Take trainings in your specialty area whenever possible
2. Network with your colleagues
3. Join a professional organization
4. Keep records of your training
5. Don't forget to take care of yourself!

LSCCRC MEMBERSHIP

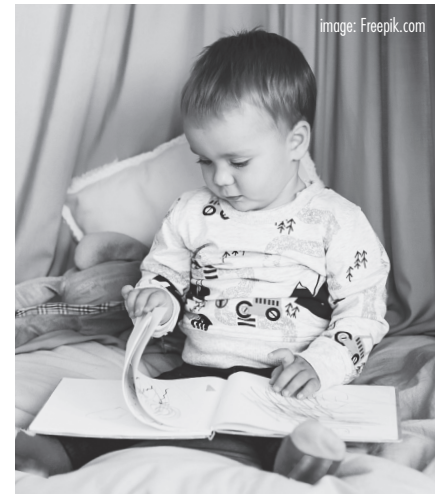
Join or update your membership now for \$25. You receive a discount on most workshops and receive updates by email. Membership in a professional organization also counts as one PAU.

LOCATE: UPDATE YOUR LOCATE PROFILE WITH NEW SELF-SERVICE LINK

<https://locate.marylandfamilynetwork.org/Provider/login>

The LOCATE: Child Care annual update questionnaire is also still available through these links! Choose the most appropriate one to request an update:

- Main Questionnaire Page: www.marylandfamilynetwork.org/for-child-care-providers/provider-questionnaires
- Center/Group Questionnaire: www.marylandfamilynetwork.org/resources/group-program-questionnaire
- Family Child Care Questionnaire: www.marylandfamilynetwork.org/resources/family-child-care-questionnaire



EARLY CARE AND EDUCATION TOWN HALLS

Maryland recently was awarded a \$10.6 million birth through five grant to further strengthen the state's early care and education system. Please join state and community leaders at a



regional town hall meeting at Wor-Wic Community College at 32000 Campus Drive in Salisbury to learn more about the grant as well as new state programs and initiatives. Share your insight into the needs of families and young children in our community to inform a new early learning strategic plan for Maryland. Town hall meetings in the tri-county area are Thursday, April 25. Registration for the morning session is 8:30-9:30 a.m., with the program 9:30-11:30 a.m.; evening session registration is 5-6 p.m., with the program 6-8 p.m. Go to this website to register early and learn more about this event: <https://tinyurl.com/yy8zuruf>

ACCESS THE LSCCRC'S INFANT AND TODDLER SERVICES

The Lower Shore Child Care Resource Center invites you to access their FREE infant and toddler services. These technical assistance services focus on providing developmentally appropriate and high-quality care for children birth to three years of age. Consultations can be through phone, email or in person.

- Daily Schedules
- Lesson Planning
- Environment
- Material Selection
- Curriculum Selection and Support
- Assessment
- Assistance with the ITERS
- Expansion of Infant and Toddler Care

If you are interested in receiving the Infant and Toddler Services, please contact Jordon Helgason at 410-677-3130 or jlhelgason@salisbury.edu

INFANT AND TODDLER PICNIC IN THE PARK: A PEER SHARING EVENT

Who: Child care providers who work with infants and toddlers
When: Saturday, June 1, noon-2 p.m. (Rain Date: Saturday, June 8)
Where: Picnic Island, Salisbury City Park (picnic tables at the Salisbury Zoo West Gate Entrance – across from Ben's Red Swings)
What: Bring your lunch and be ready to network with other infant and toddler providers. We will be diving into topics specific to infant and toddlers, such as feedings, potty training and biting. You will have time to talk with your peers to discuss your strengths, challenges and solutions in these areas. You will be eligible for one PAU for MSDE Credentialing for attending this community child care event.

To ensure we have enough space, RSVP to Jordon Helgason by Friday, May 17, at 410-677-3130 or jlhelgason@salisbury.edu.



THE LOWER SHORE CHILD CARE RESOURCE CENTER
 Suite 500
 East Campus Complex
 Salisbury, MD 21801

non-profit org.
 U.S. postage
 PAID
 Salisbury, Maryland
 permit no. 65



ADDRESS SERVICE REQUESTED



Visit Us on the World Wide Web

Just log onto www.lowershoreccrc.org or scan the code to view a copy of our newsletter, training calendar or just some helpful child care info.



Check us out on Facebook: Lower Shore Child Care Resource Center

The yearly membership cost is \$25. Membership benefits include a PAU and reduced price for most training classes. You may join or renew your membership at any time. Use the form below for membership payment as well as class registration.

REGISTRATION FORM

Name _____ Resource Center Member? Yes _____ No _____

Center (if applicable) _____

Address _____ Phone _____
 Street City State Zip Area Code

Email Address _____

Make personal check or money order for FULL AMOUNT payable to: Salisbury University
Mailing Address: C/O Lower Shore Child Care Resource Center, Suite 500, East Campus Complex,
Salisbury University, Salisbury, MD 21801. Phone Number: 410-543-6650

Course Title	Date	Fee
_____	_____	_____
_____	_____	_____
_____	_____	_____
_____	_____	_____

Credit card: _____ Visa _____ MasterCard _____ Name on card _____

Account Number _____ Expiration Date _____