

# The Child Care Chat



Lower Shore Child Care  
Resource Center  
at Salisbury University

Published by the Lower Shore Child Care Resource Center

WINTER 2020

## LETTER FROM THE DIRECTOR

Welcome to your Lower Shore training hub! Each quarter, we work to arrange the training opportunities that will meet your licensing needs, credentialing desires and learning expectations. There are new and interesting workshops available to you as well as a training brigade made up of talented and knowledgeable facilitators. Our goal is to provide you with what you need to do your very best for the children in your care.

In this edition of *The Child Care Chat*, you will find the new schedule of training that includes classes required by MSDE, and the elective training workshops that meet the needs of credentialing and your personal professional development requirements. We are always interested in hearing what sort of training hours would help you most. What are you interested in learning more about? Which trainer did you find especially informative? What sparked your interest, and how can we expand that experience? Are you interested in a series of trainings? What about a three-part training covering a particular topic? Do you want training that includes follow-up technical assistance? Let us know.

You may have noticed that the Lower Shore Child Care Resource Center is on a roll. We want to try new ways of providing the training you need along with the professional development you want. Change is inevitable; and in this case, it should



be called “progress.” How would you like to grow with us? What sort of technical assistance do you need, and how do we best provide it?

Technical assistance and support can be provided remotely. Will that meet your needs in certain situations? Could a Facetime call connect you with your Technical Assistant and allow you to share successes and have a meaningful conversation? Maybe that’s all you need to finalize a project or receive feedback that would motivate you to make changes that benefit children.

Support can come in many ways: virtually or in person; through email, calls, text messages or a photograph. The staff at the LSCCRC is flexible and delighted to work with you however is most convenient. Also, we are open to suggestions, ideas (big, small and definitely outside the box)

and constructive criticism. That is also progress. If you are interested in certain topics or have heard of teaching strategies that you would like to learn more about, just let us know. Mainly, we really want to help you meet the needs of the children.

One reminder before closing: The 2020 Early Childhood Conference is scheduled for Saturday, March 28, and is called Transforming Challenging Behaviors. The registration form is included here. Mark your calendar, request your voucher from MSDE and join us for professional development. Of course, you can contact us with any questions, comments and concerns.

*Leslie Sinclair*

# TRAINING CALENDAR

All trainings are at the LSCCRC, unless otherwise noted.

## JANUARY

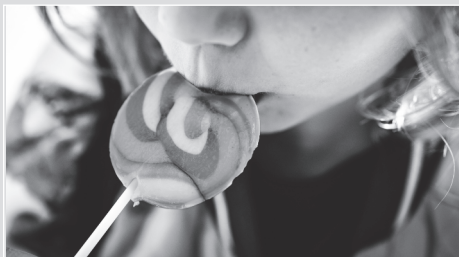
### Basic Health & Safety Training (3H)

Thursday, January 9 • 6-9 p.m.

Trainer: Leslie Sinclair

Fee: \$30 Non-Members/\$20 Members

This workshop satisfies the MSDE regulation requiring all child care providers, including all center staff and family providers, to complete this workshop. This three-hour workshop was developed in partnership with the National Center for Early Childhood Health and Wellness, Child Care Aware of America, the American Academy of Pediatrics, and Maryland Family Network, with support from the Maryland State Child Care Association.



### Taking Care of the Sweet Kids: Diabetes Information (3H) *NEW!*

Thursday, January 9 • 6-9 p.m.

Trainer: Kelly Birch

Fee: \$30 Non-Members/\$20 Members

Participants will learn how to work with children who have diabetes. There will be some information on the differences between type 1 and type 2 diabetes. You will learn about the technology of diabetes including the insulin pumps and continuous glucose monitors that you might encounter. You will also recognize ways to prevent obesity in young children and make plans to implement them in your program.

### Circle Time: You Can Make It Developmentally Appropriate (3C) *NEW!*

Saturday, January 11 • 9 a.m.-Noon

Trainer: Cindy Collins

Fee: \$30 Non-Members/\$20 Members

Are you tired of the same boring circle time routines? In this interactive session, you will walk away with three concrete success strategies to ensure your circle time is more than just a routine experience but an engaging learning opportunity! You'll learn how to support all domains while involving children in a way that promotes their individual developmental needs.



### Engaging Indoor Activities for Inclement Weather (3C) *NEW!*

Saturday, January 25 • 9 a.m.-Noon

Trainer: Courtney Coleman

Fee: \$30 Non-Members/\$20 Members

How do you keep children learning and engaged when the weather is bad? This training will review the teachable moments that exist when children cannot go outside. Learn how to choose and plan for a variety of indoor classroom activities. Try out some fun large and small group activities!

## FEBRUARY

### Including All Children and the Americans with Disabilities Act (3SN)

Saturday, February 8 • 9 a.m.-Noon

Trainer: Leslie Sinclair

Fee: \$30 Non-Members/\$20 Members

How does the Americans with Disabilities Act affect child care providers? How do

you make sure that a child with special needs is included in every activity in your child care? It can be difficult to answer these questions as you work hard to make sure all the needs of children are met in your program. Get practical information on how the ADA affects you and how to include all children in your daily activities. This class meets the MSDE requirement.

### CPR & First Aid (no COK)

Thursday, February 20 • 6-9 p.m.

Trainer: Jay Hyde

Fee: \$65 for all (non-refundable)

This is a certification course by the American Health and Safety Institute. Certification is valid for two years. The next certification course will be offered in April 2020.

### Anti-Bias Cultural Competence Awareness (3CY) *NEW!*

Thursday, February 20 • 6-9 p.m.

Trainer: Latrice Gray

Fee: \$30 Non-Members/\$20 Members

When conflicts arise in child care, it's important to know how to professionally and appropriately address the situation. Examine what causes conflict, how to prevent conflict, strategies for handling a conflict, and ways to build and maintain positive relationships with coworkers, families and friends.



### Hours of Operation:

The Resource Center is open from 9 a.m.-5 p.m., Monday through Friday. We also will be open until 9 p.m. at least one Tuesday and Thursday each month, and 9-noon at least one Saturday each month. Check our website for details about weekly hours and watch for email blasts from the LSCCRC.

**Detailed hours each month are posted on the door.**

### REPLACEMENT FOR CREDENTIAL

*(Excerpted from the Partners Newsletter)*

A reminder that a cover sheet (checklist) must be submitted with all Maryland Child Care Credential applications.

**Application Cover Sheets are available here:**

First-time applicant - <https://bit.ly/2UVxwlf>  
Renewal Cover Sheet - <https://bit.ly/2U0thNc>

## Medication Administration (6H)

Saturday, February 22 • 9 a.m.-4 p.m.  
 Trainer: Denise Conklin, RN  
 Fee: \$52 for all (non-refundable)

Learn how to correctly administer medication to children in your care. This class is required and meets the MSDE criteria. The next class is offered in April 2020.

## MARCH

### Making Sense of Sensory Processing Difficulties in Child Care Settings (3SN)

*NEW!*

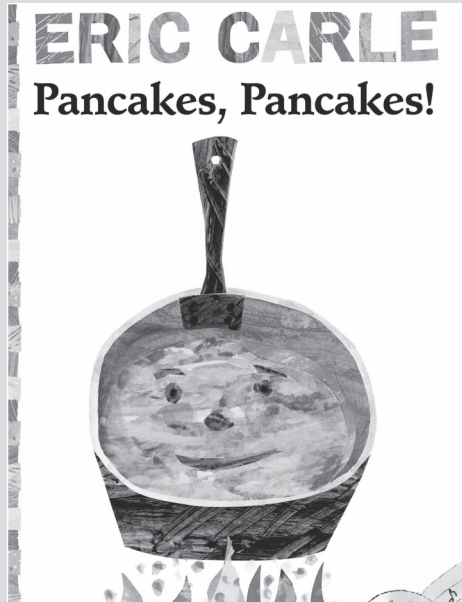
Tuesday, March 3 • 6-9 p.m.  
 Trainer: Cassidy Pradon, Ph.D.  
 Fee: \$30 Non-Members/\$20 Members

For children with sensory processing difficulties and their caregivers, even simple tasks can be challenging. Sensory processing deficits can cause delays in development, undesired behaviors, and strained relationships with peers and caregivers. Learn how to identify a child who may be dealing with sensory processing deficits, ways to make those children more successful in their child care setting and how to start the referral process to get the child more specialized help that they may require.

### Writing Quality Policies and Procedures: How to Develop and Document Daily Practices (2P) *NEW!*

Tuesday March 3 • 6:30-8:30 p.m.  
 Trainer: Dianna Aguirre  
 No Fee

Using the Maryland EXCELS standards, participants will learn how to develop policies and procedures that are professional, coherent and informative.



### Super Saturday! Two Trainings – One Day!

Saturday, March 14 • 9 a.m.-4 p.m.  
 Location: LSCRC & SBDC  
 Fee: \$40 for all  
 Early Literacy Development (3C)  
 Trainer: Cindy Collins

Participants will recognize developmental milestones for ages 6 months through 5 years. It is an in-depth training on how to implement literacy into the classroom environment for more meaningful activities, and how to assess children's literacy development. It also includes information on how to implement adaptations for children with disabilities.

Pancakes, Pancakes! (3C)  
 Trainer: Karen Price

Using Eric Carle's book *Pancakes, Pancakes!*, participants will delve into language skills such as responding to questions, retelling a text and vocabulary; along with direction following; and perhaps enjoying a little pancake snack.

### Basic Health and Safety Training (3H)

Thursday, March 19 • 6-9 p.m.  
 Trainer: Leslie Sinclair  
 Fee: \$30 Non-Members/\$20 Members

This workshop satisfies the MSDE regulation requiring all child care providers, including all center staff and family providers, to complete this workshop. This three-hour workshop was developed in partnership with the National Center for Early Childhood Health and Wellness, Child Care Aware of America, the American Academy of Pediatrics, and Maryland Family Network, with support from the Maryland State Child Care Association.

### Center Aide Orientation (3 P)

Thursday, March 19 • 6-9 p.m.  
 Trainer: Dianna Aguirre  
 Fee: \$30 Non-Members/\$20 Members

This class is created to meet the OCC requirement for center aide orientation. This class will teach the participants how to be a professional in the workplace, how to appropriately supervise children and how to work with parents as well as validate the importance of their job. These topics will lay a foundation for success as the aide begins their position in a child care program. This will be offered again in December 2020.



### 2020 Early Childhood Conference: Transforming Challenging Behaviors (6CD)

Saturday, March 28, 8 a.m.-4:30 p.m.  
 SU, Guerrieri Student Union,  
 Wicomico Room  
 Fee: \$60 for all

This conference will focus on challenging behaviors that you encounter. Learn strategies to use materials you may already have to motivate children. Also learn a four-step process to address the day-to-day challenging behaviors that you face. Join your colleagues, network with others who do what you do and visit vendors of early childhood materials. Earn a PAU and learn something new!



## UPDATE YOUR LOCATE INFORMATION AND ENTER TO WIN!

Relying on word of mouth to promote your child care business is no longer enough. This comes from a new *Forbes Magazine* report that gathered data on over 150,000 child care providers across the United States. As parents become busier and more tech savvy with each passing year, they are looking online to find child care and relying less on talking to their friends for information.

The good news is that when you regularly update your Maryland Family Network LOCATE: Child Care record with complete and current information, parents are better able to find and choose your program. Update your information every month at [marylandfamilynetwork.org](http://marylandfamilynetwork.org) and tell us when your program has vacancies, changes to hours, fees, etc. Your information will be reviewed and made live in just two business days. Every time you update your record you will be entered into a monthly sweepstakes to win a \$25 Amazon gift card.

The **LOCATE: Child Care** annual update questionnaire is also available through these links! Choose the most appropriate one to request an update:

- Main Questionnaire Page: [www.marylandfamilynetwork.org/for-child-care-providers/provider-questionnaires/](http://www.marylandfamilynetwork.org/for-child-care-providers/provider-questionnaires/)
- Center/Group Questionnaire: [www.marylandfamilynetwork.org/resources/group-program-questionnaire/](http://www.marylandfamilynetwork.org/resources/group-program-questionnaire/)
- Family Child Care Questionnaire: [www.marylandfamilynetwork.org/resources/family-child-care-questionnaire/](http://www.marylandfamilynetwork.org/resources/family-child-care-questionnaire/)



REGISTER NOW

LSCCRC Early Childhood  
Conference

**TRANSFORMING  
CHALLENGING  
BEHAVIORS**

SATURDAY, MARCH 28, 2020

Salisbury University  
Guerrieri Student Union  
8 a.m.-4:30 p.m.

## HOW TO GET YOUR TRAINING HOURS

**At the LSCCRC:** In a classroom, networking with others through active discussion.

**Online:** Convenient, individual, working @ home or @ the LSCCRC.

**Onsite:** Specifically arranged and tailored to the group's specific need.

**Think about it, choose what best suits you, and contact the LSCCRC at 410-543-6650.**

## LIMITED ONLINE CLASS REGISTRATION NOW AVAILABLE

You can now register and pay online for select classes at the Resource Center! These classes are CPR/First Aid, Medication Administration and the 2020 Early Childhood Conference at Salisbury University (only for those who are paying individually). This is a testing phase and we are planning a full rollout of this service in 2020 when member/non-member pricing becomes available. For more information and instructions contact [kayungel@salisbury.edu](mailto:kayungel@salisbury.edu) or call 410-543-6650.

## TRAINING POLICY

**C-Curriculum CD-Child Development CY-Community H-Health, Safety and Nutrition P-Professionalism SN-Special Needs**

Thank you for abiding by the following training policy. By doing this, you are helping us maintain our high standards and provide the highest quality training:

- You must preregister for all classes. Registration forms can be found on LSCCRC's website, in our newsletter or at our office. Training registrations are on a first-come, first-served basis; register early. **You are not considered to be registered for a class until payment has been received in our office.**
- Payment for a class should be made payable to Salisbury University. We gladly accept cash, check, Visa or MasterCard. There is a \$25 returned check fee.
- Class registration fees are nonrefundable. **However, if you are unable to attend a training session, you must notify our office by close of business the day before the training in order to receive credit toward another class.**

- In order to ensure that all classes are conducted as scheduled, please register early. If the minimum registration requirement is not met prior to the class, it will be cancelled. We will notify all registered students of this cancellation.
- In order to get a certificate for training, an attendee will need to be present for the entire training.
- Please be on time for all trainings, as no one will be admitted late. Leaving a training early or arriving late can distract others from learning. Also, taking only a portion of a training does not allow for a participant to get a full grasp of the subject and takes away training opportunities from other providers who need the full amount of training hours.
- Although we love children at LSCCRC, please do not bring them to class with you.

- Certificates will be awarded to all participants successfully completing a class. Please keep these certificates for licensing and credentialing purposes. If you need a duplicate copy of your certificate, you will be charged \$1 per copy.
- Please check with local television stations for any possible cancellations due to bad weather. If a training is cancelled, it will be rescheduled for a later date.
- Please be respectful of the trainer and other class members. Save private conversations for break time or after class. Cell phones, including texting, can be disruptive to others. Please turn your cell phone off at the beginning of class or put it on silent. Disruptive participants will be asked to leave the class and will not be given credit for the class or a refund.



## MARYLAND CREDENTIAL PROGRAM UPDATE

The Maryland Child Care Credential Program booklet was recently updated! Updated information includes a description of application types and more detailed descriptions of the documentation for Professional Activity Units (PAUs). The booklet and other forms for the Credential Program can be found at <https://earlychildhood.marylandpublicschools.org/child-care-providers/office-child-care/credentialing-branch/child-care-credential-program>.

## MEMBERSHIP AT THE LOWER SHORE CHILD CARE RESOURCE CENTER

Join/update now for \$25. You will receive a discount  
on most workshops and earn one PAU.



## NEW YEAR, FRESH IDEAS: INFANT AND TODDLER PEER SHARING EVENT

Thursday, January 23  
LSCCRC, 6:30-8:30 p.m.

Do you work with infants and toddlers? Are you looking for fresh ideas to plan activities for the new year? Please join us for an infant and toddler peer sharing event! You will have an opportunity to network with other infant and toddler child care providers to discuss activities for each domain of learning. You are encouraged to bring in a small activity that you find engages your children and would like to share with the group.

A potluck dinner will be provided and you will be eligible for a PAU for the Maryland Credential Program for attending this event.

RSVP is requested. If you have any questions about the event or want to RSVP, please contact Leslie Sinclair at 410-543-6650 or [lasinclair@salisbury.edu](mailto:lasinclair@salisbury.edu).



Lower Shore Child Care  
Resource Center  
*at Salisbury University*

### WINTER 2020

Published by the Lower Shore  
Child Care Resource Center

Suite 500 East Campus Complex  
Salisbury, MD 21801

410-543-6650

LOCATE: Child Care

1-877-261-0060

[www.lowershoreccrc.org](http://www.lowershoreccrc.org)

### The Lower Shore Child Care Resource Center at Salisbury University

The Lower Shore Child Care Resource Center is a member of  
the Maryland Child Care Resource Network with funding  
provided from the Maryland State Department of Education,  
through Maryland Family Network and Salisbury University.

Salisbury  
UNIVERSITY



MARYLAND  
FAMILY  
NETWORK

*Leading Maryland's  
Child Care Resource Centers*



MARYLAND CHILD CARE  
RESOURCE NETWORK

## MARYLAND EXCELS 2.0 UPDATE

Since the Maryland EXCELS 2.0 launch on Friday, October 26, 2018, there have been reports of challenges providers and programs are experiencing in the Maryland EXCELS and Maryland Accreditation portals. Maryland EXCELS is working to identify solutions to improve your experience in the new system. For more information about common challenges and their solutions, visit the Solution Center at [www.marylandexcels.org/system](http://www.marylandexcels.org/system).



## THINK ABOUT CONTRIBUTING TO YOUR CHILD CARE RESOURCE CENTER

Everyone can use a tax deduction, and there is a way to help the LSCCRC through the Salisbury University Foundation. Go to this site and please be generous!

<https://salisburyu.networkforgood.com/projects/26911-seidel-school-of-education-the-lower-shore-child-care-resource-center>

## EARLY CHILDHOOD SURVEY BY THE SALISBURY UNIVERSITY SCHOOL OF SOCIAL WORK

The Salisbury University School of Social Work is conducting a survey of early childhood providers (home-based providers, centers and Head Start) and families regarding behavioral health, school readiness and parent engagement pertaining to the birth to five population on the Eastern Shore.

They have sent out a mailing, which you may have already received, but just to make it easier, here is the link to the Early Child Care Provider Survey: <https://qrqo.page.link/JHpn>

Please share this link with your families for the Parent Survey:

<https://qrqo.page.link/S9c5>

Your feedback is important and will help inform future policy and practice to improve resources for parents and early childcare providers on the Eastern Shore. If you have questions, don't hesitate to contact our office.



## DO YOU RECEIVE EMAILS FROM THE LSCCRC?

By checking your email, you will receive the most up-to-date news from the LSCCRC.

Are you on our email list? Frequently, we send an update on training or scheduled activities. You might also find links to other sites and opportunities for you to take advantage of up-to-the minute news important to you. Sometimes there are last minute changes to office hours or open-late hours announced, as are PAU opportunities and events coming to our tri-county area. If you are not receiving these emails, we probably don't have your correct email address. Please get in touch so we can correct that. Call us at 410-543-6650. And, don't forget to check your email!



## UPDATE: ONLINE TRAINING @ LSCCRC

The SmartHorizons 45-hour **Infant and Toddler Growth & Development** portion of the Preservice is now available. We do not have information on when the Methods & Materials course will be approved and back on the SmartHorizons platform. We will keep you posted.

SmartHorizons is the platform we support for high-quality online trainings. You can access their site through an easy link from our website! Click on the training tab at [www.lowershoreccrc.org](http://www.lowershoreccrc.org), then click on "Online Training Classes from SmartHorizons." There is a good selection of online training to help you get what you need, when you need it. If you want to take these online courses, and have difficulty, call us and we will walk you through the registration process. If you do not have reliable connectivity at your address, we have a laptop for you to use at the LSCCRC Resource Room. Come on in!

## PROFESSIONAL DEVELOPMENT RESPONSIBILITIES

1. Take trainings in your specialty area whenever possible
2. Network with your colleagues
3. Join a professional organization
4. Keep records of your training
5. Don't forget to take care of yourself!



## AN EVENING FOR CHILDREN'S ADVOCACY

Monday, January 27, 2020  
House Office Building  
6 Bladen Street, Annapolis, MD  
4-9 p.m.

This is an opportunity for early education professionals to remind our elected officials that learning begins at birth and continues during out-of-school time. High-quality child care and Head Start programs are an essential part of Maryland's educational infrastructure, helping children arrive at school ready to succeed and keeping them learning in out-of-school time. Funding for these programs is a critical investment in children's future success. Visit your legislators and **be a big voice for little kids!**

## MARYLAND ASSOCIATION FOR THE EDUCATION OF YOUNG CHILDREN

Thursday, February 6, 2020  
LSCCRC, 6:30 p.m.

# mdaeyc

Early childhood educators and advocates for young children, including home-based and center-based providers, public school teachers, homeschoolers, parents and anyone interested in the welfare of young children, are invited to attend the next meeting of the Maryland Association for the Education of Young Children (MDAEOYC). The agenda includes news on the Evening in Annapolis, the Early Childhood Fair and an open discussion about plans for the new year. Plan to attend and bring a friend. Be a part of YOUR professional organization. By joining the MDAEOYC, you are eligible to earn two PAUs a year if you attend three quarterly meetings.

## CONGRATULATIONS ARE IN ORDER

The Lower Shore Child Care Resource Center congratulates the following providers on their most recent accomplishments:

- **Denise Davis:**  
Achieved EXCELS Level 3
- **Sherrie Gravenor:**  
Achieved EXCELS Level 1
- **King's Kids Academy:**  
Achieved EXCELS Level 5
- **Little Leaders University:**  
Achieved EXCELS Level 1
- **Pamela Upshur:**  
Achieved EXCELS Level 1
- **Wor-Wic CDC:**  
Achieved MSDE Accreditation

*If you are interested in having your achievements published in our newsletter or would like support in meeting these accomplishments, contact your technical assistance coordinator at the LSCCRC.*





THE LOWER SHORE CHILD CARE RESOURCE CENTER  
Suite 500  
East Campus Complex  
Salisbury, MD 21801

non-profit org.  
U.S. postage  
PAID  
Salisbury, Maryland  
permit no. 65



ADDRESS SERVICE REQUESTED



Visit Us on the World Wide Web

Just log onto [www.lowershoreccrc.org](http://www.lowershoreccrc.org) or scan the code to view a copy of our newsletter, training calendar or just some helpful child care info.



Check us out on Facebook: Lower Shore Child Care Resource Center

*The yearly membership cost is \$25. Membership benefits include a PAU and reduced price for most training classes. You may join or renew your membership at any time. Use the form below for membership payment as well as class registration.*

**REGISTRATION FORM**

Name \_\_\_\_\_ Resource Center Member? Yes \_\_\_\_\_ No \_\_\_\_\_

Center (if applicable) \_\_\_\_\_

Address \_\_\_\_\_  
Street City State Zip Area Code Phone \_\_\_\_\_

Email Address \_\_\_\_\_

**Make personal check or money order for FULL AMOUNT payable to: Salisbury University**  
**Mailing Address: C/O Lower Shore Child Care Resource Center, Suite 500, East Campus Complex,**  
**Salisbury University, Salisbury, MD 21801. Phone Number: 410-543-6650**

Course Title	Date	Fee
_____	_____	_____
_____	_____	_____
_____	_____	_____
_____	_____	_____

Credit card: \_\_\_\_\_ Visa \_\_\_\_\_ MasterCard \_\_\_\_\_ Name on card \_\_\_\_\_

Account Number \_\_\_\_\_ Expiration Date \_\_\_\_\_